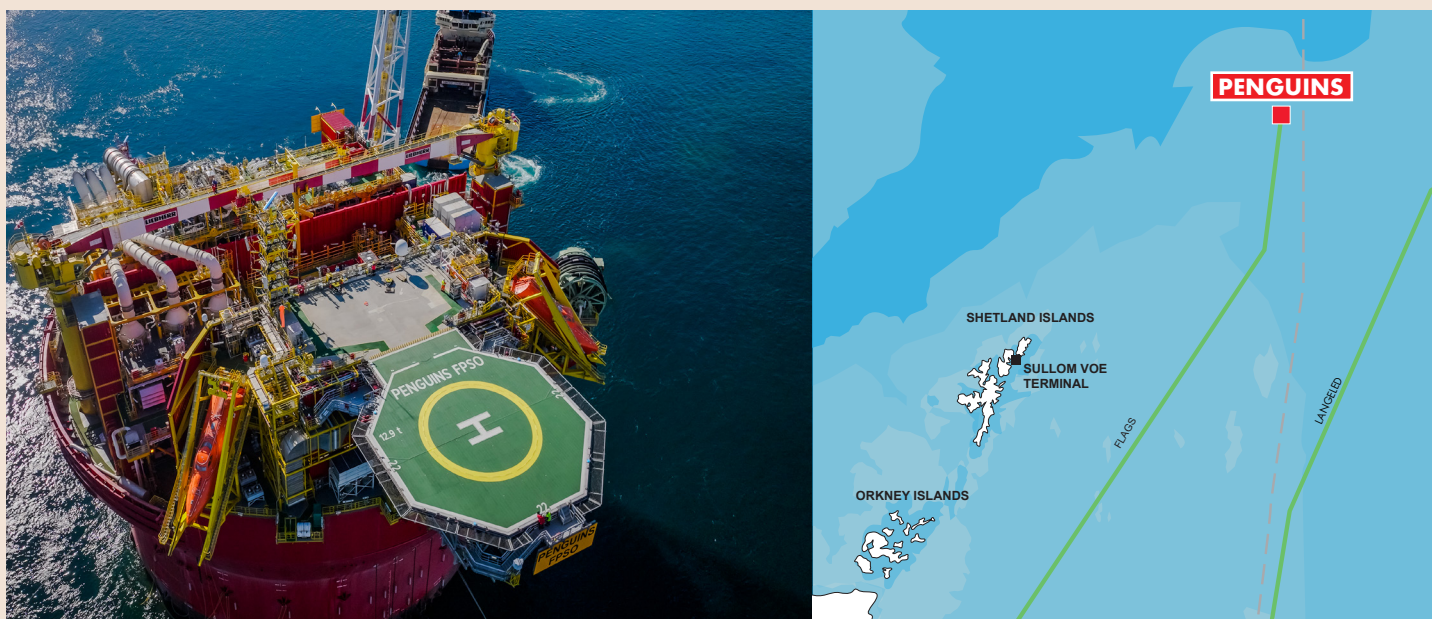


PENGUINS

INSTALLATION

The Penguins facility came on stream in 2025 with the new FPSO having around 30% lower operational emissions compared with Brent Charlie, its original host. It will be a source of secure domestic energy production, keeping homes and businesses running in the UK and beyond.



KEY FACTS

- **Block:** 211/8, 211/13 and 211/14
- **Sector:** Northern North Sea
- **Approx distance to land:** 241 km (150 miles) north-east of the Shetland Islands
- **Water Depth:** 165 m (541 ft)
- **Hydrocarbons Produced:** Oil and Gas
- **Export Method Oil:** Natural gas produced by Penguins will be exported through the existing pipeline to the St Fergus terminal in north-east Scotland. Oil will be transported by tankers to refineries outside of the UK
- **Operated / Non-Operated:** Operated

INFRASTRUCTURE INFORMATION

- **Entry Specification:** Sweet crude oil and associated gas 1.6mol% CO₂, H₂S <2.5ppm
- **Exit Specification:** BS&W 0.5%vol. Oil Storage 600kbbbls
Gas specification maximums (as per Flaga line):
 - CO₂ 1.6% vol
 - H₂S 2.5ppmv
 - Water 35ppmv
 - Cricondenbar: 105bar
 - Oxygen 10ppm
 - Mercury 0.01micrograms/m³
- **Details of primary separation processing facilities:** 2x Subsea Production Systems, Flexible Risers, 1st Stage Separator, 2nd Stage Separator, Inlet and Interstage Heater, Cargo Tanks, Produced Water Treatment
- **Outline details of gas treatment facilities:** 3 stage HP Compressor, LP Compressor, Suction Scrubbers (x4), Glycol Dehydration, H₂S management (scavenger chemical injection).

HIGH LEVEL CAPACITY INFORMATION

The basic capacity information is portrayed by colour coded 'traffic lights' that reflect thresholds of availability over the next 5 years.

Available Capacities: ● >25% ● 5% to 25% ● <5% ○ Unknown

Penguins Platform Firm processing capacity available	Ullage as % of system capacity				
	2026	2027	2028	2029	2030
Oil export capacity - 35kbbbls/d	●	●	●	●	●
Gas compression capacity - 120MMscf/d	●	●	●	●	●
Gas export capacity	●	●	●	●	●
Gas lift capacity	●	●	●	●	●
Produced water handling capacity - 10kbbbls/d	●	●	●	●	●
Dehydration capacity - 120mmmscf/d	●	●	●	●	●
H ₂ S removal capacity	●	●	●	●	●
Water injection capacity	●	●	●	●	●

CONTACT INFORMATION

Adura: For further enquiries regarding the above please contact ABE-Notices@adura.com

Neo Next: For further enquiries regarding the above please contact Andrew Steele Andrew.Steele@neonext.com

Last update: January 2026